



Active Patient ACCESS Report

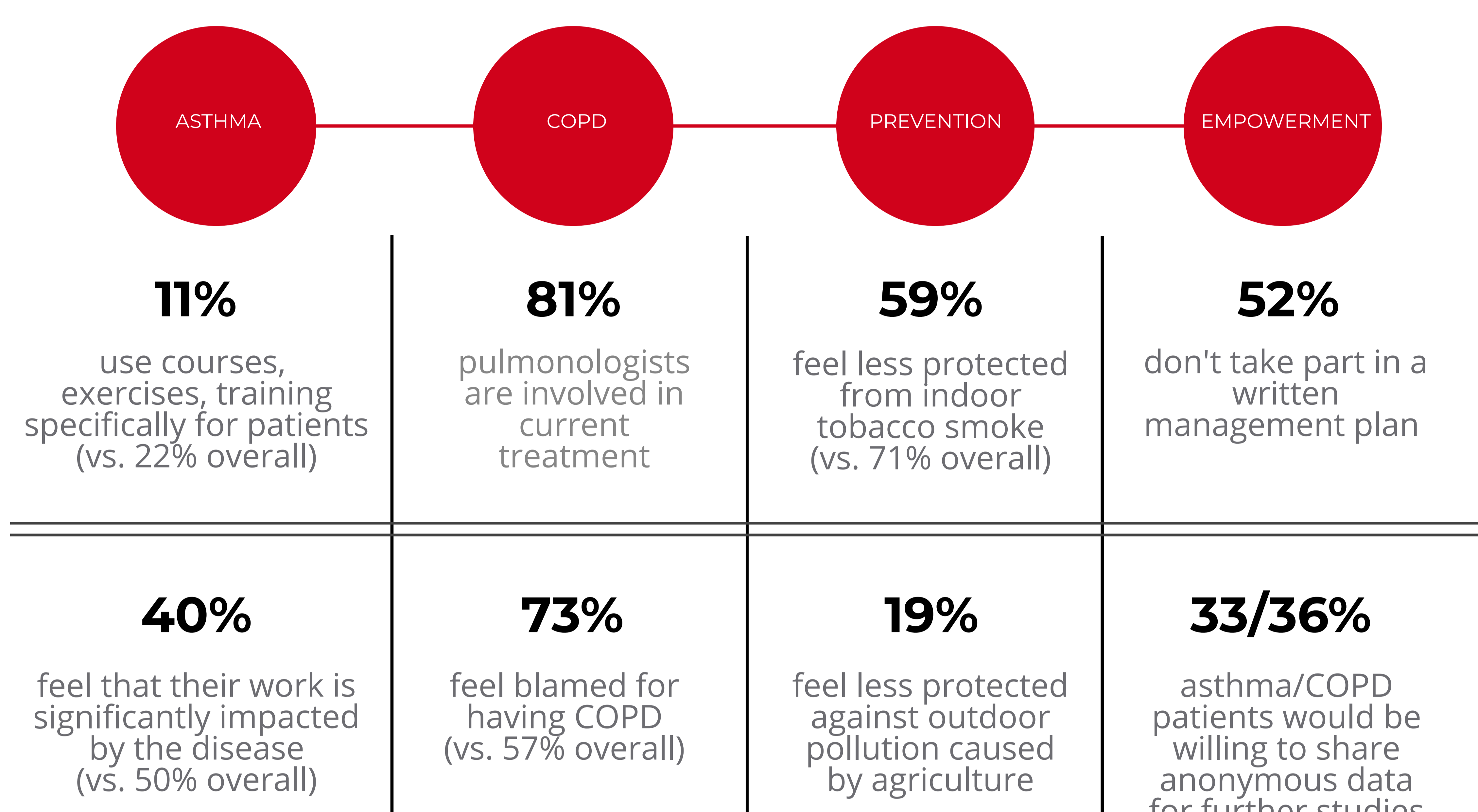
country fact sheet: France

What is the ACCESS report?

EFA conducted a survey of 700+ participants in seven countries of patients with asthma, patients with COPD and perceptions in prevention and patient empowerment. This country fact sheet represents further examination of highlights or noted deviations from overall averages.

Summary

Fewer French asthma patients use courses or training specifically for patients. Many French COPD patients feel blamed for having COPD. French patients feel less protected from indoor tobacco smoke. In general, French patients have less access to centres specialised in asthma/COPD when compared to the overall average.



EFA



#ShowLeadership

read full report: <https://efanet.online/ACCESS>



Active Patient ACCESS Report

country fact sheet: France

ASTHMA

Diagnosis testing

Lung Function /Spirometry incl. taking relief spray was only used by 22% (vs. 37% overall and 5th most used overall)

Care:

Only 56% used Spirometry or similar lung function measurement (vs. 79% overall)

COPD

Diagnosis testing

Peak flow meter tests were used by 56% (vs. 38% overall average)

Care

- 29% visit HCPs 12 times a year or more and 31% visit HCPs between 6-11 times a year
- Peak flow meter test is more used (47% vs. 30% overall average)

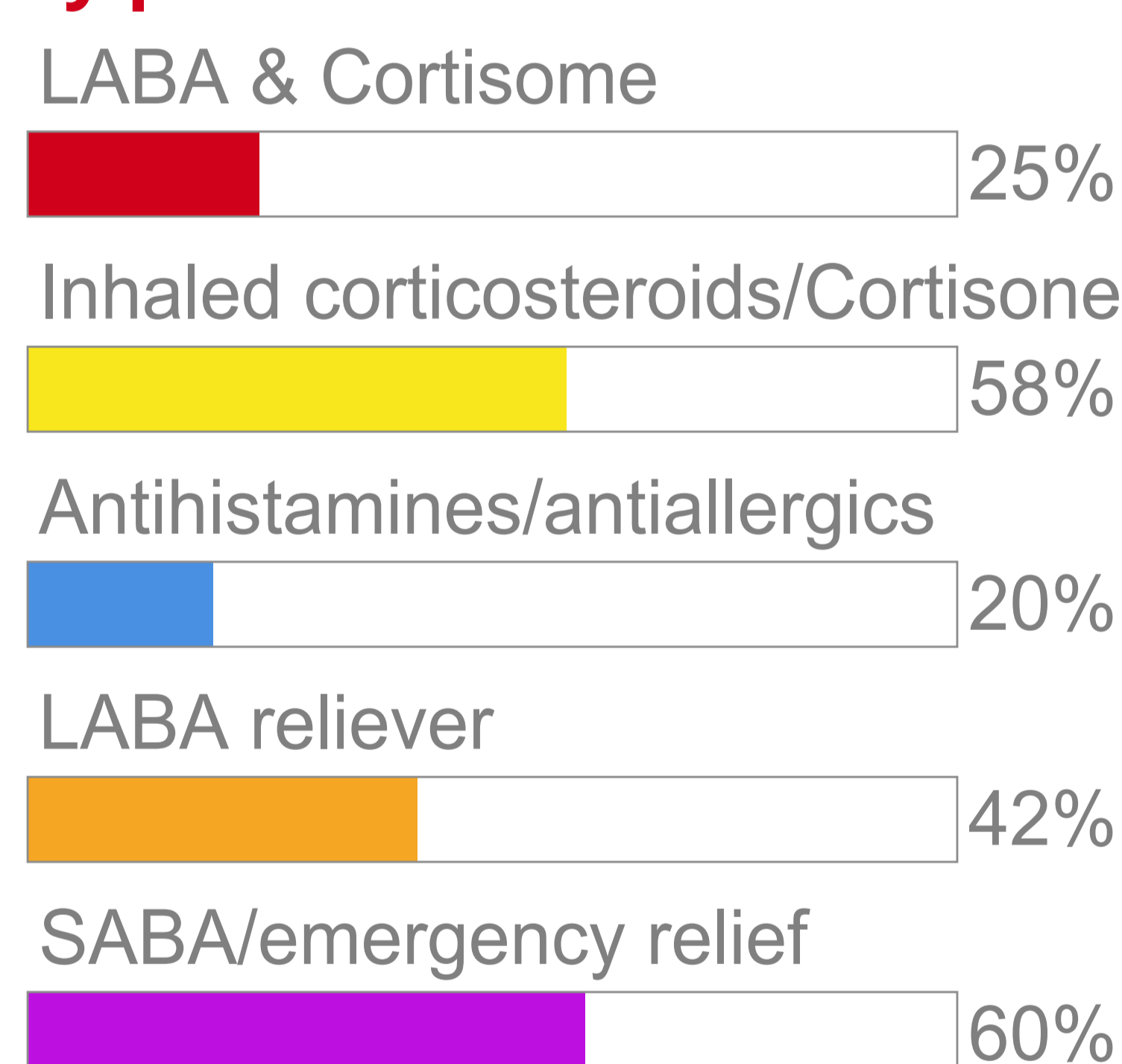
PREVENTION

58% feel that flu vaccination is promoted by the public authorities (vs. 68% overall). 17% have real-time information to air quality (vs. 34% overall)

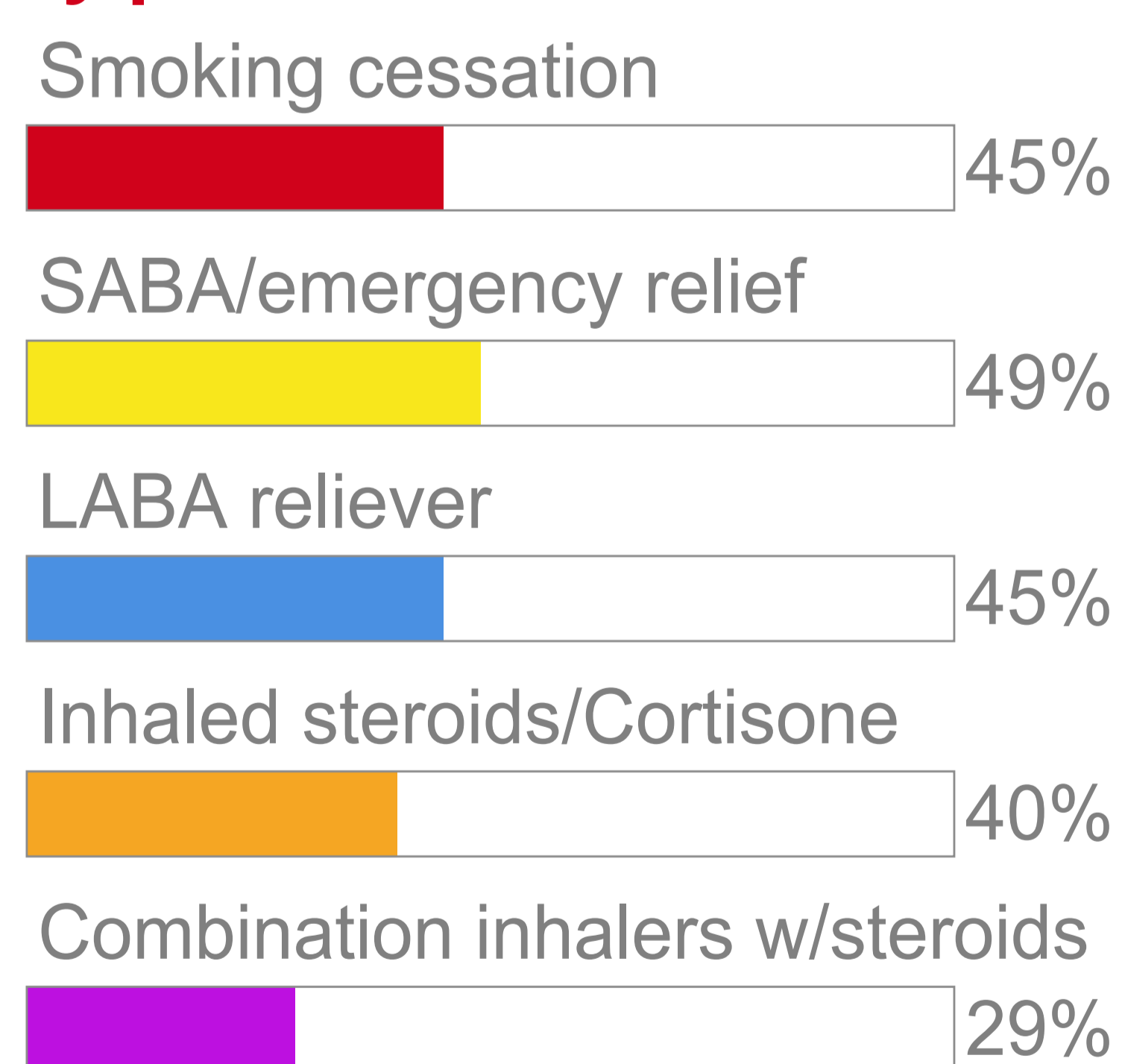
EMPOWERMENT

French patients have less access to centres specialised in asthma/COPD (14% vs. 29% overall)

Treatments currently used by patients for their asthma



Treatments currently used by patients for their COPD



EFA



#ShowLeadership

read full report: <https://efanet.online/ACCESS>